



# WELCOME

MANAGEMENT QUIZ

BQ-SET -3 [BOARD QUESTIONS]



1. Control of government is highest  
in .....



Gov.  
department

Public  
corporation

Public ltd.  
company

Private ltd.  
company



## 2. One disadvantage of forming a partnership is ?



No. Of partner r  
limited

Specialist skill  
may be  
introduced

More financial  
capital is usually  
available

Any financial  
losses must be  
shared



**3.** Which one following is not included in the “contents of partnership deed”



Name of partnership firm

Duration of partnership

Address of business

Face value of share

**Question**

"Achievement due to one will be shared by all others", this happens in

**Marks**

1

**::: Options :::**

1.  General partnership

2.  Limited partnership

3.  Both(i) and (ii)

4.  None of the above

Question

In Automobile Industry, departments can be on the basis of-----

Marks

1

::: Options :::

1.  Territorial

2.  Product

3.  Customer

4.  Process

[<-- Previous](#)

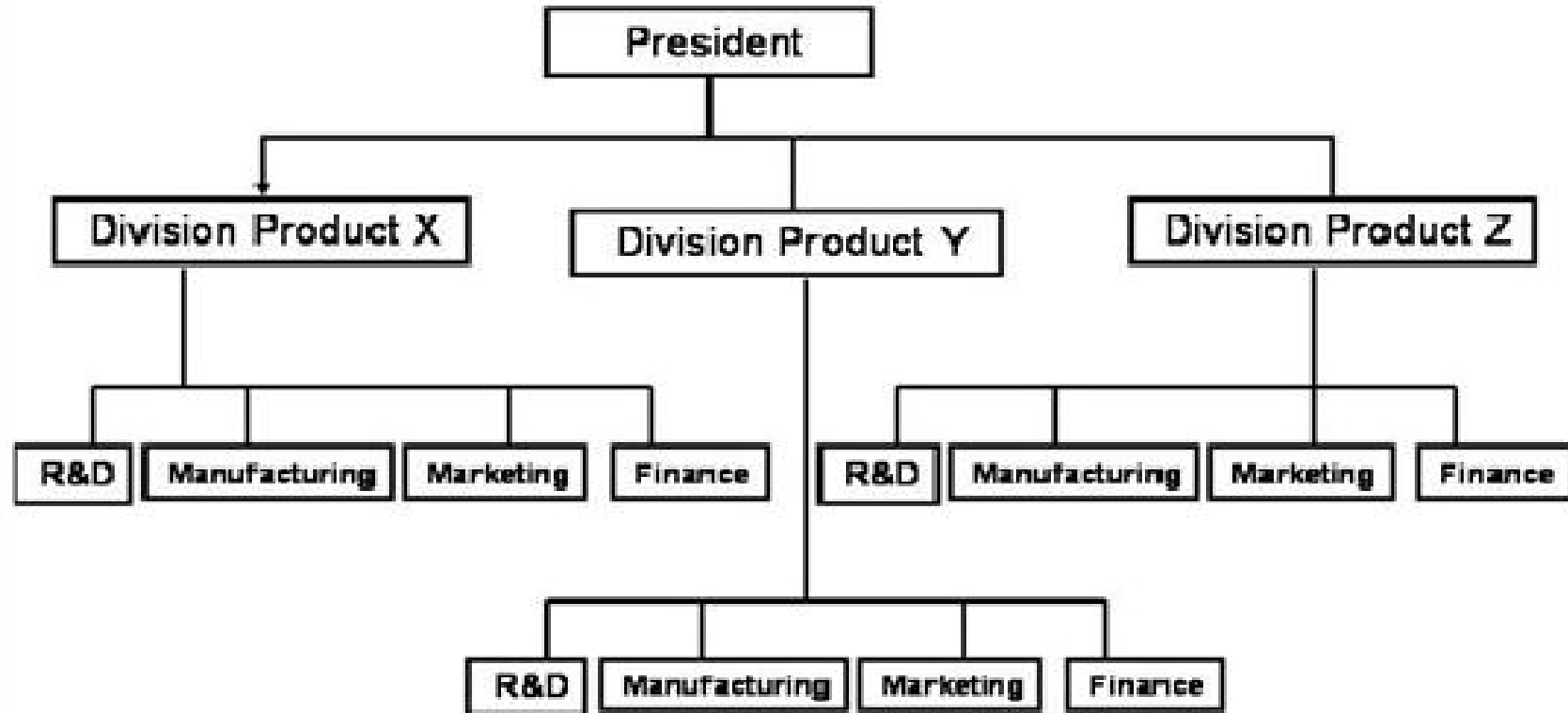
[Save Answer](#)

[Next-->](#)

[View All Questions](#) [\[End Exam\]](#)

# Which type of organization structure is this?

Question



::: Options :::

1.  Line Organisation

2.  Line and staff organisation

3.  Functional Organisation

4.  None of the above



7. A private limited company can have minimum.... & maximum.... members




4,50

4,20

2,50

2,20





8. A company in which not less.....of the paid up share capital is held by government is known as Gov. company



48

49

50

51



## 9. Which factor decide the type of organization?



Size of the organization

Nature of product being manufactured

Complexcity of the problem being faced

All of the above


**10.** What sort of company is Infosys today ? Well there are shares of company which are traded in stock market people can buy & sell them, The company started in July 1981 in Pune at that time it was a Private Ltd. Company

Private Ltd.  
company

Public Ltd.  
company

Gov. sector

Public  
corporation



11. When a group of people pulled together for a special task then formed structure of organization is called ..... organization



line

Line & staff

project

functional

# 11. Which is barrier in communication

Language  
problem

Poor  
knowledge

Confused  
information

All

## 12. Line organization is characterised by

Simple easy &  
flexible  
structure

Clear & simple  
division of  
authority

No working  
confusion

All of the above

**Question**

Factors which affects departmentation are .....

**Marks**

1

**!!! Options !!!**

1.  Product

2.  Process

3.  Function

4.  All of the Above

[<-- Previous](#)

[Save Answer](#)

[Next-->](#)

[View All Questions](#) **(End Exam)**

**Question**

Which are factors on which span of control depends?

**Marks**

1

**::: Options :::**

1.  Trained and experienced subordinate

2.  Type of work

3.  Capacity of executive or manager

4.  All of the above

[<-- Previous](#)

[Save Answer](#)

[Next-->](#)

[View All Questions](#)

[\[End Exam\]](#)



**Question**

\_\_\_\_\_ can be defined as running business by the single owner

**Marks**

1

**::: Options :::**

1.  Proprietorship

2.  Partnership

3.  Private limited

4.  Public limited

[<-- Previous](#)

[Save Answer](#)

[Next-->](#)

[View All Questions](#) **[End Exam]**

**Question**

Anand engineering works in business of customized laboratory material and equipment supplier. One day they received a new development assignment. Which type of organization they have to reform internally for this?

**Marks**

1

**::: Options :::**1.  Line organization2.  Line and staff organization3.  Functional organization4.  Project organization[<-- Previous](#)[Save Answer](#)[Next-->](#)[View All Questions](#) **(End Exam)**

**Question**

Which of the following is not the responsibility of a production manger?

**Marks**

1

**::: Options :::**

1.  Quality

2.  Quantity

3.  Storage of goods

4.  Controlling accidents

[<-- Previous](#)

[Save Answer](#)

[Next-->](#)

[View All Questions](#) **[End Exam]**

**Question**

The firm type of Bajaj Auto Ltd is

**Marks**

1

**::: Options :::**

1.  Proprietorship

2.  Partnership

3.  Joint stock company

4.  Public Sector

[<-- Previous](#)

[Save Answer](#)

[Next-->](#)

[View All Questions](#) **[End Exam]**

**Question**

Organizations have hierarchical structures because

**Marks**

1

**::: Options :::**

1.  It is convenient to do so

2.  It is done by every organization

3.  Specific responsibilities can be assigned for each levels

4.  It provides opportunities for promotions

[<-- Previous](#)

[Save Answer](#)

[Next-->](#)

[View All Questions](#) [\[End Exam\]](#)

**Question**

Which statement regarding Joint stock companys is incorrect?

**Marks**

1

**::: Options :::**

1.  Joint stock companies have no separate legal status than their members.

2.  Members of joint stock company have limited Liability.

3.  Joint stock companies can undertake several activities like expansion,modernisation,diversification ,etc.

4.  None of the above

[<-- Previous](#)

[Save Answer](#)

[Next-->](#)

[View All Questions](#) [\[End Exam\]](#)



**Question**

Grouping the activities or operations of an enterprise into various units is referred as-

**Marks**

1

**::: Options :::**

1.  centralization

2.  departmentation

3.  delegation

4.  communication

[<-- Previous](#)

[Save Answer](#)

[Next-->](#)

[View All Questions](#) [\[End Exam\]](#)

**Question**

A joint venture can be defined as:

**Marks**

2

**::: Options :::**

1.  Two firms collaborate together on a specific project

2.  One firm licences its intellectual property to another firm

3.  Two firms merge together

4.  Two firms come together to form a third, legally separate firm



**Question**

Following are the kinds of partners-

**Marks**

1

**::: Options :::**

1.  Active partner and Sleeping Partner

2.  Owner and Distrubuter

3.  Global Partner and Media Partner

4.  Permanent Partner and Temperory Partner

**Question**

Which of the following comes under Government sector \_\_\_\_\_

**Marks**

1

**::: Options :::**

1.  BOSCH

2.  TATA

3.  L & T Ltd

4.  ONGC

**Question**

Unlimited liability is present in

**Marks**

2

**::: Options :::**

1.  Proprietorship

2.  Partnership

3.  Both a & b

4.  None of above

**Question**

Following business is not coming under sole proprietorship ?

**Marks**

1

**::: Options :::**

1.  Service centre

2.  Press shop

3.  Hardware unit

4.  Insurance company

**Question**

Co-operatives play an important role in:

**Marks**

2

**::: Options :::**

1.  aerospace.

2.  agriculture.

3.  manufacturing.

4.  all of the above.

**Question**

Which of the following is one of the principles of organization?

**Marks**

1

**::: Options :::**

1.  Order

2.  Span of Control

3.  Scalar Cahin

4.  None of the above

**Question**

Line organization follows -----method of communication

**Marks**

1

**::: Options :::**

1.  Scalar Chain

2.  Unity in Command

3.  Open System

4.  Closed System

**Question**

Which of the following is / are the characteristics of Organisation ?

**Marks**

1

**::: Options :::**

1.  Small or large group of people

2.  Group leaded by executive Leader

3.  Allocates duties and responsibilities to employees

4.  All of the above





Thank You

